



## WORM GEAR STYLE - WIRE ROPE HOISTS

SATURN utilizes High-Ratio Worm Gear Drives on all New Equipment. The worm gears provide a safe secondary mechanical braking means to hold and control the load. This style of hoist with its inherent braking capabilities is one of the **safest hoists in the market**.

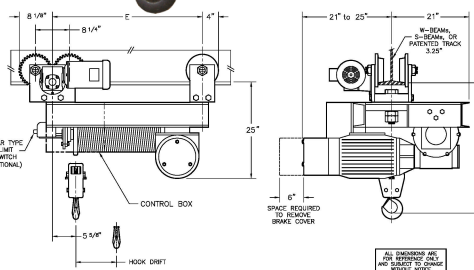
Our Worm Gear Style Hoists offer distinct advantages over other style of hoists on the market. They can hold a load for infinite periods of time as well as handle long lifts without problems; unlike a common hoist with load brake which can heat up, lock up and wear out. With less moving parts and no required adjustment, they have proven to be **lower in maintenance** than alternative hoist drives. Other benefits of this Worm Gear Style is that it offers a **more rugged, reliable**, smooth and quiet operation.

Apart from the hoist motion, Saturn also utilizes Worm Gear Drives in our trolleys, tractor drives, and end trucks. This allows us to meet industry standards without the need for the added cost of a trolley brake or the added maintenance down the road.



### STANDARD MODELS

- SATURN's rugged design makes our Wire Rope Hoists built to last. They are **heavy duty** with **high quality construction**. We even still have many machines in operation for over 40 years.
- They are simple, extremely reliable, and low maintenance even on our heavy duty applications.
- Our Standard Hoists come in three different models.
  - EA    - FA    - GA
- These hoists come in **1 - 15 ton units** with **lifts of up to 100 feet** for all types of applications.
- Our Hoists are built to order, so even our standard equipment can be **customized to best fit your needs**.
- All of our Hoists are factory balanced, load tested at 125% capacity, and inspected by engineering before leaving our doors.



### Standard Features Offered

- Worm Gear Drives
- H3 Duty classification
- TENV/30-Min/Inv. Ready motors
- 230/460v-3Ph-60Hz
- Upper Paddle Limit Switch
- NEMA 1 Enclosures (Indoor service)
- Temp Rating: 10F - 120F
- Drop Lugs
- Trolley speeds: 35 or 60 FPM

### SUSPENSION OPTIONS





Our Standard model of Worm Gear Wire Rope Hoists can be easily configured into Twin Hook or Low Headroom Hoist designs to best suit your application. They can also be built to fit in many different environments including hazardous or outdoors.

## TWIN HOOK HOISTS

- SATURN Twin Hook Hoists are a safe, reliable choice when handling long bulky loads.
- Each hoist is built to a specific Hook Centers that best fits the given application.
- Perfect for paper mills, textiles, and other repetitive production applications



- Available in all suspension options as well as top running/dual rail configurations (pictured above)
- Capacities from 1 Ton to 7.5 Ton with custom hoists up to 20 ton.
- Standard Hook Centers up to 8Ft Wide with EXTRA WIDE hook centers available.
- We offer lifts of up to 50 feet on our Twin Hook Hoists

## LOW HEADROOM HOISTS

- SATURN has two styles of low headroom hoists; Semi-Low and Ultra-Low
- Our Semi-Low Headroom Hoists provide low headroom with many configuration options including raised, under-running, & dual-rail
- Combined our Semi-Low with a tractor drive (pictured below) to provide low headroom while also negotiating a curved monorail.



- For some of the lowest headroom hoists offered in the industry we have our Ultra-Low Headroom Series.
- Our Ultra-Low headroom's start as low as 12" on our 1 ton models. With our Semi-Low series ranging from 20" to 36" based on capacity.

## Optional Features

- |  |  |  |
|--|--|--|
| ■ Power Voltage: 208V or 575V-3Ph-60Hz | ■ Wired Pendants/Radio Control System  | ■ Warning Devices: Flashing Light/Horn |
| ■ Plate Hooks                          | ■ Mainline Contactor                   | ■ Pendant Outrigger Arms               |
| ■ Upgrades for Heavy Service           | ■ NEMA 4/TENV Motors                   | ■ Encoders (For Automated Operation)   |
| ■ Heavy Duty Oil Shear Hoist Brake     | ■ UL/CUL Registered Control Panels     | ■ Bumpers: Rubber/Spring               |
| ■ 60-Min/Inverter Duty (10:1) Motors   | ■ Hoist Gear Type/Trolley Travel Limit | ■ Synthetic Oil/Heaters                |
| ■ Class H Insulated Motors             | ■ Slack Cable Limit Switches           | ■ Steel Weather Covers                 |
| ■ VFD Control Packages (2-Speeds)      | ■ Heavy Duty Rope Guide System         | ■ High Temperature Features            |
| ■ 2-Speed Motors/Contactor Controls    | ■ Deep Grooved Drums                   | ■ Corrosion Resistant Features         |
| ■ Trolley Brake                        | ■ Overload Devices                     | ■ Spark Resistant Features             |

