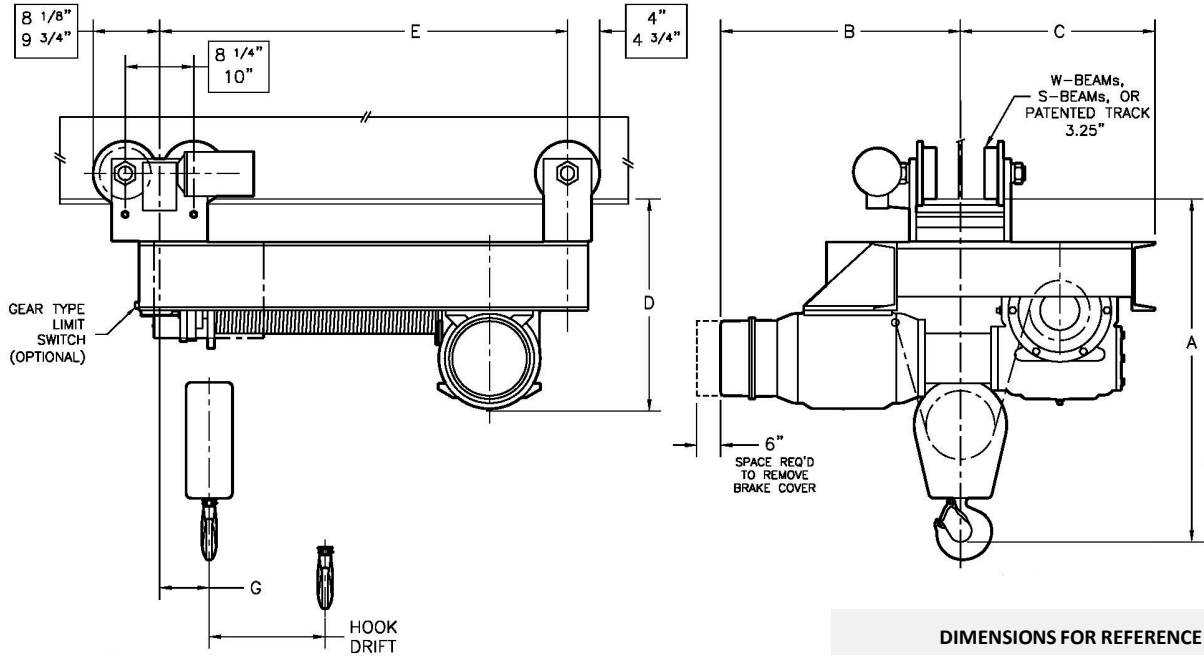


SINGLE HOOK MONORAIL HOIST

5 TO 10 TON (SINGLE REEVED/STANDARD HEADROOM)



DIMENSIONS FOR REFERENCE

LONGER LIFTS AS CUSTOM

STANDARD TROLLEY SPEEDS: 35 & 60 FPM

CATALOG NO.	CAPACITY (LBS)	SPEED (FPM)	LIFT (FT)	REEVING TYPE	CABLE (DIA)	MOTOR (HP @ RPM)	HEADRM (A)	(B)	(C)	(D)	WB (E)	(G)	HOOK DRIFT	WEIGHT (LBS)
GA10-2125-MT	10,000	21	25	2PS	1/2	10 @ 1200	44"	32"	26"	26"	40 3/4"	9 1/2"	6 1/2"	1950
GA10-2150-MT	10,000	21	50	2PS	1/2	10 @ 1200	44"	32"	26"	26"	53 3/4"	9 1/2"	13"	2125
GA10-2175-MT	10,000	21	75	2PS	1/2	10 @ 1200	44"	32"	26"	26"	66 3/4"	9 1/2"	20"	2300
GA10-21100-MT	10,000	21	100	2PS	1/2	10 @ 1200	44"	32"	26"	26"	79 3/4"	9 1/2"	26"	2475
GA10-3225-MT	10,000	32	25	2PS	1/2	15 @ 1800	44"	36"	28"	29"	42 5/8"	9 1/2"	6 1/2"	2150
GA10-3250-MT	10,000	32	50	2PS	1/2	15 @ 1800	44"	36"	28"	29"	55 5/8"	9 1/2"	13"	2375
GA10-3275-MT	10,000	32	75	2PS	1/2	15 @ 1800	44"	36"	28"	29"	68 5/8"	9 1/2"	20"	2500
GA10-32100-MT	10,000	32	100	2PS	1/2	15 @ 1800	44"	36"	28"	29"	81 5/8"	9 1/2"	26"	2675
GA15-1620-MT	15,000	16	20	4PS	7/16	12 @ 1800	40"	26"	22"	24"	48 7/8"	5 5/8"	5"	1650
GA15-1630-MT	15,000	16	30	4PS	7/16	12 @ 1800	40"	26"	22"	24"	58 7/8"	5 5/8"	7 1/2"	1775
GA15-1640-MT	15,000	16	40	4PS	7/16	12 @ 1800	40"	26"	22"	24"	68 7/8"	5 5/8"	10"	1900
GA15-1650-MT	15,000	16	50	4PS	7/16	12 @ 1800	40"	26"	22"	24"	78 7/8"	5 5/8"	12 1/2"	2025
GA15-2525-MT	15,000	25	25	2PS	5/8	20 @ 1200	50"	40"	32"	34"	45 5/8"	10"	6 1/2"	2500
GA15-2550-MT	15,000	25	50	2PS	5/8	20 @ 1200	50"	40"	32"	34"	58 3/8"	10"	13"	2725
GA15-2575-MT	15,000	25	75	2PS	5/8	20 @ 1200	50"	40"	32"	34"	71 5/8"	10"	20"	2850
GA15-25100-MT	15,000	25	100	2PS	5/8	20 @ 1200	50"	40"	32"	34"	84 5/8"	10"	26"	3025
GA15-3025-MT	15,000	30	25	2PS	5/8	20 @ 1200	50"	40"	32"	34"	45 5/8"	10"	6 1/2"	2500
GA15-3050-MT	15,000	30	50	2PS	5/8	20 @ 1200	50"	40"	32"	34"	58 3/8"	10"	13"	2725
GA15-3075-MT	15,000	30	75	2PS	5/8	20 @ 1200	50"	40"	32"	34"	71 5/8"	10"	20"	2850
GA15-30100-MT	15,000	30	100	2PS	5/8	20 @ 1200	50"	40"	32"	34"	84 5/8"	10"	26"	3025
GA20-1620-MT	20,000	16	20	4PS	1/2	15 @ 1800	48"	35"	29"	31"	53 1/8"	8"	5 1/2"	2875
GA20-1630-MT	20,000	16	30	4PS	1/2	15 @ 1800	48"	35"	29"	31"	63 1/8"	8"	8"	3125
GA20-1640-MT	20,000	16	40	4PS	1/2	15 @ 1800	48"	35"	29"	31"	74 1/8"	8"	10 1/2"	3375
GA20-1650-MT	20,000	16	50	4PS	1/2	15 @ 1800	48"	35"	29"	31"	84 1/8"	8"	13"	3625

COMMON MODELS WITH MOTORIZED TROLLEY (MT) ONLY ABOVE – OTHERWISE BUILD TO ORDER