

TOP-RUNNING /UNDER-RUNNING END TRUCKS

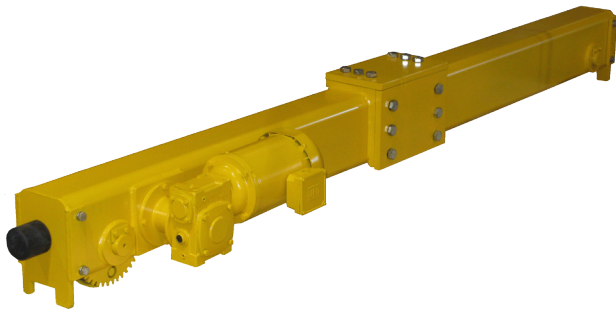
SATURN Bridge Crane End Trucks are designed for superior performance. SATURN end trucks meet the Design Specifications as per CMAA 70/74 as well as the Safety Standards for Overhead Cranes as per ASME B30.2/.17.

STANDARD FEATURES::

- Capacities: 1-Ton to 7.5 Ton
- CMAA Service Classification: Class C
- Spans: Up To 50Ft
- Single Girder Style
- Worm Gear Drives
- TEFC/Inverter Ready (5:1) Trolley Motors
- Power Voltages: 230V or 460V-3Ph-60Hz
- Temp Rating: 10F to 120F
- Steel-Alloy Wheels
- Drop Lugs/Rail Sweeps/Rubber Bumpers
- Drilled Mounting Pads
- Safety Yellow Paint
- Conforms to OSHA 1910.179 Safety Standards

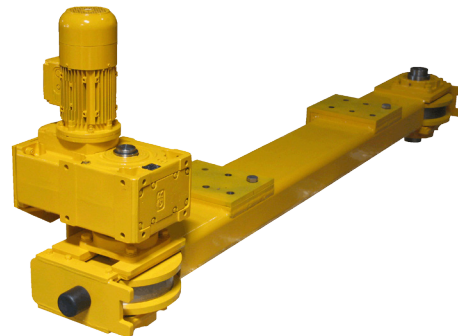
OPTIONAL FEATURES/MODIFICATIONS:

- Higher Capacities: Up To 15-Ton
- Power Voltage: 208V or 575V-3Ph-60Hz
- Upgrades for Heavy Service: Class D
- Inverter Duty (10:1) Motors
- Helical Gear Drives/Oversized Bearings
- Narrow/Hardened Wheels (Patented Track)
- Hardened Wheels (For Faster Speeds)
- Spring Bumpers
- Double Girder Style
- VFD Bridge Control Panel (2-Speeds)
- NEMA 4/TENV Motors (Outdoor Service)
- High Temperature Features
- Corrosion Resistant Features
- Spark Resistant Features



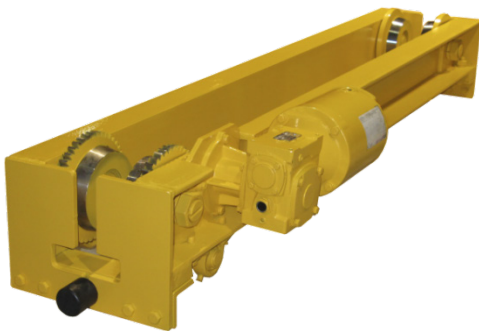
TOP RUNNING – STANDARD

- Geared Wheels & Pinion
- Worm Gears
- Class C Service



TOP RUNNING – DIRECT DRIVE

- Helical Gears
- Higher Capacities
- Higher Speeds
- Up To Class D Service



UNDER-RUNNING MOTORIZED

- Geared Wheels & Pinion
- Worm Gears
- Class C Service



UNDER-RUNNING TRACTOR DRIVEN

- No Gears/Ease Of Maintenance
- Wide Range Of Speeds
- T-144 & T-150 Tractor Models
- Up To Class D Service