

ARTICULATING MONORAIL DRIVE TRACTORS

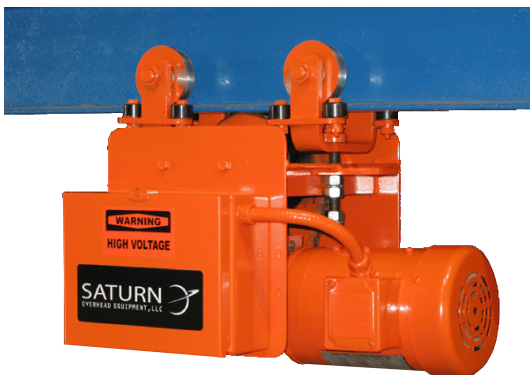
SATURN articulating drive tractors are designed to work on monorails with tight radius curves and switches.

SATURN offers 3 Tractor **MODELS** that cover a very wide range of capacity, speed and service requirements.

- **T-144-AT** (Light/Medium Duty); BLUE/ORANGE/RED Class Units
- **T-150-AT** (Heavy Duty); BLUE/ORANGE/RED Class Units
- **T-200-AT** (Extra Heavy Duty); CUSTOM BUILT Units - Only

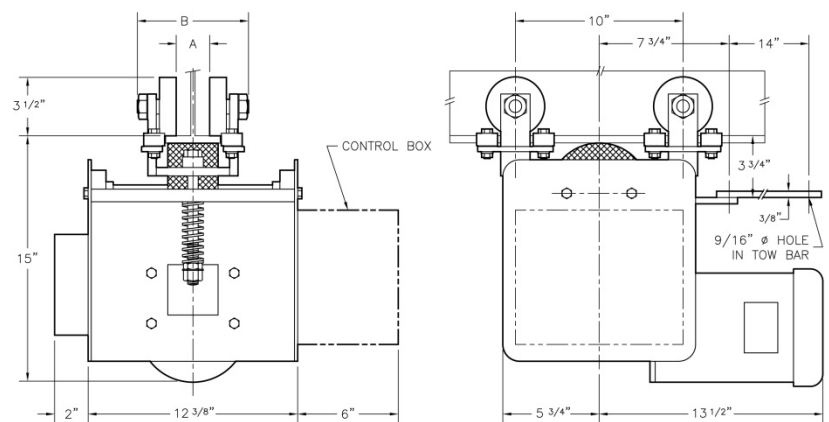
STANDARD FEATURES:

- Capacity Range: 1 to 20 Ton
- Speed Range: 15 FPM to 110 FPM
- Beam Types: W, S or Patented with Curves
- Tractors Pass Thru Monorail Switches & Interlocks
- Articulating Trolleys: Flangeless Wheels & Guide Rollers
- Worm Gear Drives
- TEFC/Inverter Ready Motors (5:1)
- Power Voltages: 230V or 460V
- Control Voltage: 115V
- NEMA 1 Enclosure: Indoor Service
- Single Speed Contactor Controls
- Temperature Rating: 10F to 120F
- Factory Balanced
- Trolleys Built to Fit Flanges (Non-Adjustable)
- Straight Tow Bar
- Polyurethane Drive Wheel
- Safety Orange Paint
- High Quality Construction



T-144 AT

- Negotiates 2Ft to 4Ft Radius Curves
- CMAA Service: Class C

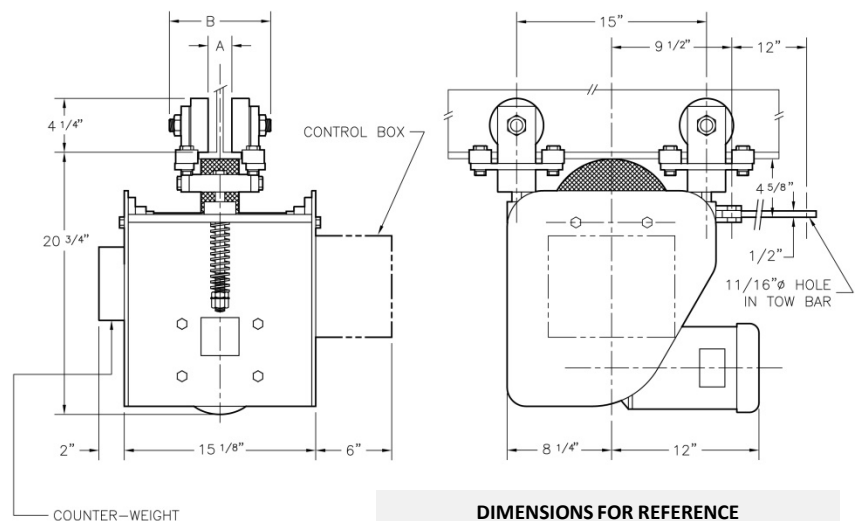


DIMENSIONS FOR REFERENCE



T-150 AT

- Negotiates 3Ft to 6Ft Radius Curves
- CMAA Service: Class D



DIMENSIONS FOR REFERENCE