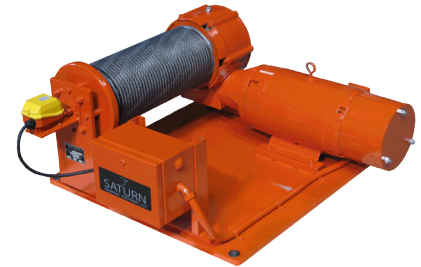


## BASE MOUNTED WINCHES

SATURN Base Mounted Winches are rugged and reliable and a safe choice when a winch best fits the lifting application. Our Base Mounted Winches can be built in single-line or twin-line configurations. There are many times when a winch will be used in combination with a sheave and even a hook block and dead-end arrangement. SATURN hoists meet the Performance Standards for Overhead Electric Wire Rope Hoists as per ASME HST-4 as well as the Safety Standards for Overhead Hoists as per ASME B30.16.

### STANDARD FEATURES:

- **Capacities: 1000 LB to 3500 LB**
- Single Line Lift: 44Ft
- ASME Service Classification: H3 Duty
- Worm Gear Drives
- AC/Disc Hoist Brake (150% Motor Torque)
- TENV/30-Min/Inv. Ready (3:1) Hoist Motor
- Power Voltages: 230V or 460V-3Ph-60Hz
- Control Voltage: 115V
- NEMA 1 Enclosures: Indoor Service
- Single Speed Contactor Controls
- Fuses & Thermal Overload Protection
- Gear Type Limit Switch
- Temp Rating: 10F to 120F
- Safety Orange Paint
- Heavy Duty/High Quality Construction
- Conforms to NFPA 70 (National Electric Code)
- Conforms to OSHA 1910.179 Safety Standards

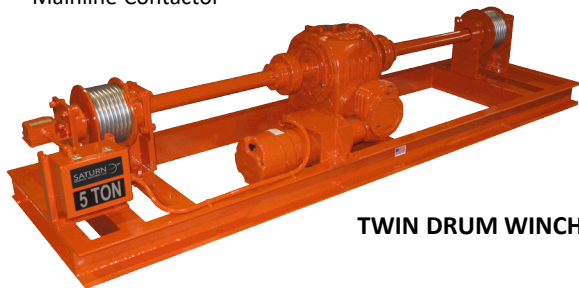
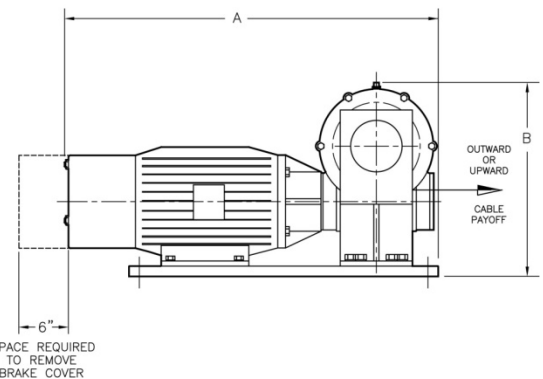
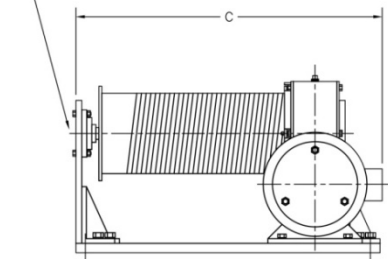


**STANDARD BASE MOUNTED WINCH**

### OPTIONAL FEATURES/MODIFICATIONS:

- **Higher Capacities: Above 3500 LBS**
- Longer Lifts: Over 44Ft
- Power Voltage: 208V or 575V-3Ph-60Hz
- Upgrades for Heavy Service: H4/H4+ Duty
- Heavy Duty Oil Shear Hoist Brake
- 60-Min/Inverter Duty (10:1) Motor
- Class H Insulated Motor
- VFD Control Package (2-Speed)
- 2-Speed Motor/Contactor Controls
- Wired Pendant
- Radio Control System
- Mainline Contactor
- Control Voltage: 24V
- NEMA 4 (Outdoor Service)
- UL/CUL Registered Control Panels
- Heavy Duty Rope Guide System
- Deep Grooved Drum (100% Depth Of Cable)
- Synthetic Oil/Heaters (Operation < 10F)
- Anti-Condensation Heaters
- Safety Yellow Paint
- High Temperature Features
- Corrosion Resistant Features
- Spark Resistant

GEAR TYPE LIMIT SWITCH  
STANDARD ON ALL WINCHES (NOT SHOWN)  
(ADD 7-1/2" to "C" DIMENSION)



**TWIN DRUM WINCH**

### LONGER LIFTS AS CUSTOM

CATALOG NO.	CAPACITY (LBS)	SPEED (FPM)	LIFT (FT)	REEVING TYPE	CABLE (DIA)	WINCH MOTOR (HP @ RPM)	DIMENSION (A)	DIMENSION (B)	DIMENSION [C]	WEIGHT (LBS)
EC1-4044	1,000	40	44	1PS	1/4	2 @ 1200	33"	16"	22 1/2"	450
EC1-6044	1,000	60	44	1PS	1/4	3 @ 1800	33"	16"	22 1/2"	450
EC1.5-4044	1,500	40	44	1PS	5/16	3 @ 1200	35"	16"	24 1/2"	500
EC1.5-6044	1,500	60	44	1PS	5/16	5 @ 1800	33"	16"	22 1/2"	450
FC2-4040	2,000	40	40	1PS	3/8	4 @ 1200	38"	18"	29 1/2"	525
FC2-6040	2,000	60	40	1PS	3/8	6 @ 1800	38"	18"	29 1/2"	600
FC2.5-4040	2,500	40	40	1PS	7/16	5 @ 1200	38"	18"	29 1/2"	625
FC2.5-6040	2,500	60	40	1PS	7/16	7.5 @ 1800	38"	18"	29 1/2"	625
FC3-4040	3,000	40	40	1PS	7/16	6 @ 1200	38"	18"	29 1/2"	625
FC3-6040	3,000	60	40	1PS	7/16	10 @ 1800	38"	18"	29 1/2"	675
FC3.5-4048	3,500	40	48	1PS	7/16 E	7.5HP @ 1200	38"	18"	29 1/2"	850