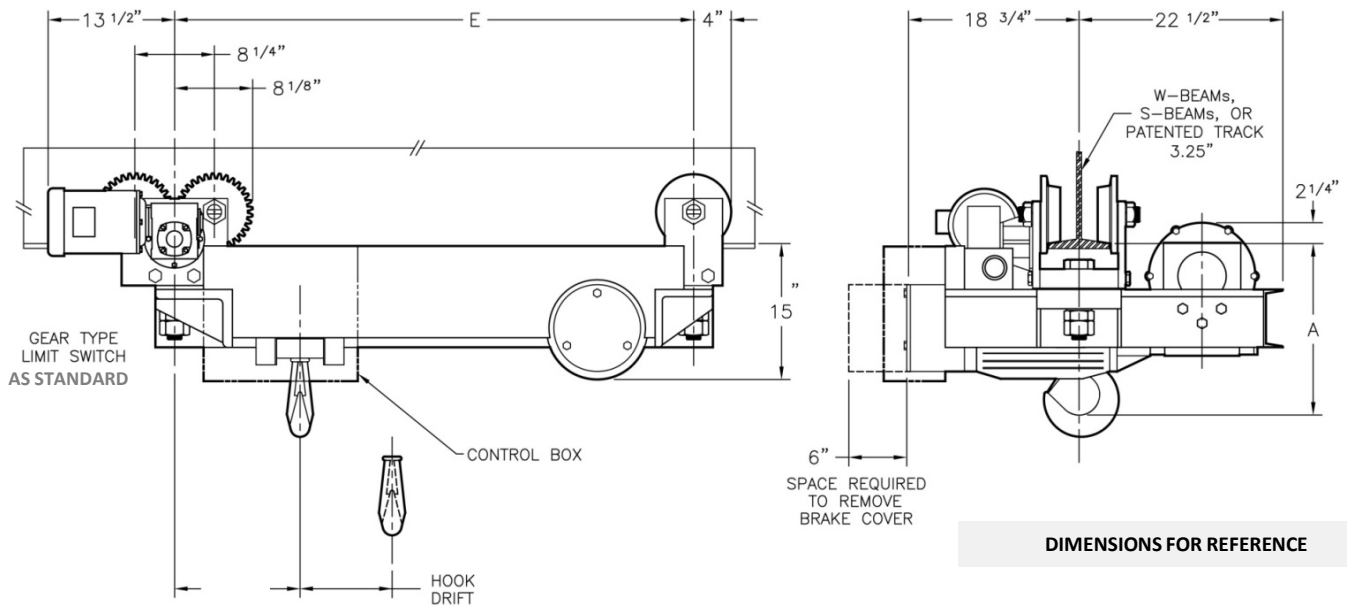


ULTRA-LOW HEADROOM MONORAIL HOIST

4 TO 5 TON (SINGLE REEVED)



LONGER LIFTS AS CUSTOM

MAX FLANGE: 10"

STANDARD TROLLEY SPEEDS: 35 & 60 FPM

CATALOG NO.	CAPACITY (LBS)	SPEED (FPM)	LIFT (FT)	REEVING TYPE	CABLE (DIA)	HOIST MOTOR (HP @ RPM)	HEADROOM (A)	WHEEL BASE (E)	HOOK DRIFT	WEIGHT (LBS)
FE8-1012-MT	8,000	10	12	4PS	3/8	5 @ 1200	19"	45 3/8"	3"	1200
FE8-1019-MT	8,000	10	19	4PS	3/8	5 @ 1200	19"	51 7/8"	4 1/2"	1275
FE8-1024-MT	8,000	10	24	4PS	3/8	5 @ 1200	19"	56 7/8"	5 3/4"	1350
FE8-1029-MT	8,000	10	29	4PS	3/8	5 @ 1200	19"	61 7/8"	7"	1425
FE8-1036-MT	8,000	10	36	4PS	3/8	5 @ 1200	19"	67 7/8"	8 3/4"	1500
FE8-1040-MT	8,000	10	40	4PS	3/8	5 @ 1200	19"	73 3/8"	10"	1575
FE8-1512-MT	8,000	15	12	4PS	3/8	7 1/2 @ 1800	19"	45 3/8"	3"	1200
FE8-1519-MT	8,000	15	19	4PS	3/8	7 1/2 @ 1800	19"	51 7/8"	4 1/2"	1275
FE8-1524-MT	8,000	15	24	4PS	3/8	7 1/2 @ 1800	19"	56 7/8"	5 3/4"	1350
FE8-1529-MT	8,000	15	29	4PS	3/8	7 1/2 @ 1800	19"	61 7/8"	7"	1425
FE8-1536-MT	8,000	15	36	4PS	3/8	7 1/2 @ 1800	19"	67 7/8"	8 3/4"	1500
FE8-1540-MT	8,000	15	40	4PS	3/8	7 1/2 @ 1800	19"	73 3/8"	10"	1575
FE10-1012-MT	10,000	10	12	4PS	3/8	6 @ 1200	19"	45 3/8"	3"	1200
FE10-1019-MT	10,000	10	19	4PS	3/8	6 @ 1200	19"	51 7/8"	4 1/2"	1275
FE10-1024-MT	10,000	10	24	4PS	3/8	6 @ 1200	19"	56 7/8"	5 3/4"	1350
FE10-1029-MT	10,000	10	29	4PS	3/8	6 @ 1200	19"	61 7/8"	7"	1425
FE10-1036-MT	10,000	10	36	4PS	3/8	6 @ 1200	19"	67 7/8"	8 3/4"	1500
FE10-1040-MT	10,000	10	40	4PS	3/8	6 @ 1200	19"	73 3/8"	10"	1575
FE10-1512-MT	10,000	15	12	4PS	3/8	10 @ 1800	19"	45 3/8"	3"	1200
FE10-1519-MT	10,000	15	19	4PS	3/8	10 @ 1800	19"	51 7/8"	4 1/2"	1275
FE10-1524-MT	10,000	15	24	4PS	3/8	10 @ 1800	19"	56 7/8"	5 3/4"	1350
FE10-1529-MT	10,000	15	29	4PS	3/8	10 @ 1800	19"	61 7/8"	7"	1425
FE10-1536-MT	10,000	15	36	4PS	3/8	10 @ 1800	19"	67 7/8"	8 3/4"	1500
FE10-1540-MT	10,000	15	40	4PS	3/8	10 @ 1800	19"	73 3/8"	10"	1575

COMMON MODELS WITH MOTORIZED TROLLEY (MT) ONLY ABOVE – OTHERWISE BUILD TO ORDER